



— ◆ —  
BEAUTIFUL HOMES FOR  
**BEAUTIFUL  
MEMORIES**  
— ◆ —



FIRST CITY  
— MIHAN, NAGPUR —



LIVE IN THE LAP OF  
**LUXURY**





## CONTENTS

INTRODUCTION

AMENITIES

MASTERPLAN

2D FLOOR PLANS

3D FLOOR PLANS

ROUTE MAP

PROJECT HIGHLIGHTS

SPECIFICATIONS



## WELCOME TO THE NEW AGE GATED COMMUNITY

Relish enthralling beauty and enjoy the comfort of luxurious residences at First city ranging between 1BHK to 5BHK apartments and penthouses. De-stress yourself at First City which is a welcoming distraction from the hustle and bustle of the city.

The sprawling recreational facilities blend in perfectly with the finest architecture and landscape including amenities like Tennis and Badminton court, squash court, Sauna, Steam, Jacuzzi, and many more. So you do not just live here but also ENJOY THE WORLD AROUND YOU...!



AN INDULGENCE CALLED

**LIFE**



## ACCOMMODATES EVERY CHOICE OF LIVING

Each apartment at First city is more than just an accommodation, designed and constructed by experts of the industry. The First City project offers a variety of recreational activities to encompass the idea of an indulgence called life.

Built with uncompromising standards, each tower is an example of modern living at its finest along with superior Infrastructure.





## GET ADDICTED TO A NEW FITNESS REGIME

For a chiselled physique or boosted agility now you've got to go nowhere else. First City's equipped gymnasium facilities and the lush green arena is a pump in itself to help you keep a healthy lifestyle. First City offers you a treat of fresh air as you enjoy a spirited game of tennis with your family and friends keeping you engaged, entertained and fit. Oh! or there's always a pool you can jump in!





GIVING A NEW MEANING TO  
IN-HOUSE PARTIES!



NOTHING BEATS STRESS LIKE  
TENNIS IN THE EVENING!



LET'S GET INTO  
**DETAIL**



1 BHK - 3D Floor Plan



2 BHK - 3D Floor Plan



3 BHK - 3D Floor Plan



# SITE PLAN



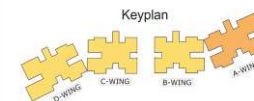
## 2D FLOOR PLAN



TYPE 4BHK  
 Area: 2258 Sq.ft.  
 Carpet Area: 1695 Sq.ft  
 Facing: North

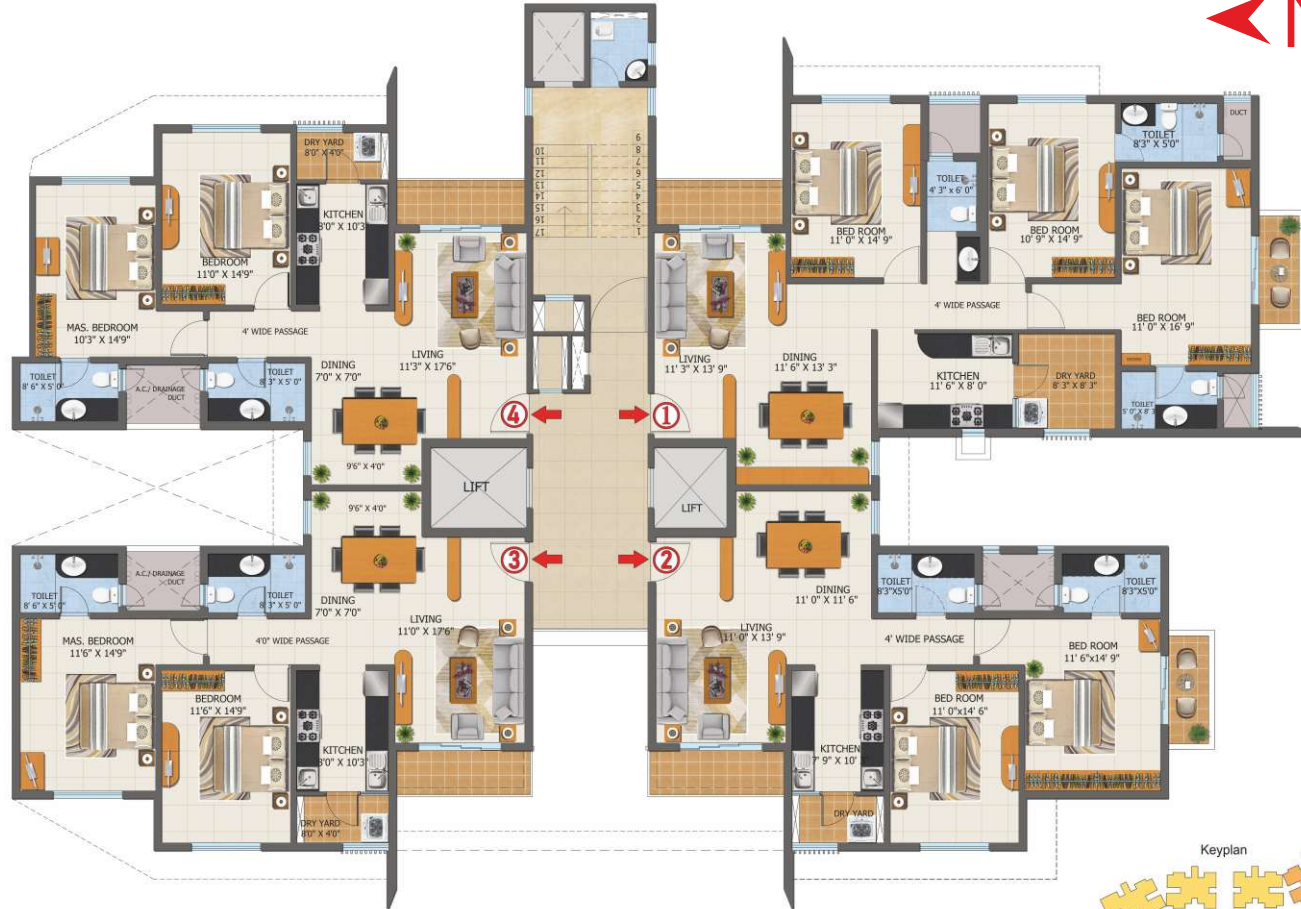
TYPE 5BHK  
 Area: 2736 Sq.ft.  
 Carpet Area: 1986 Sq.ft  
 Facing: North

WING 'A' - Podium & 1st Floor Typical Floor Plan





## 2D FLOOR PLAN

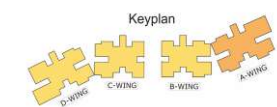


TYPE 2BHK  
 Area: 1248 Sq.ft.  
 Carpet Area: 892 Sq.ft  
 Facing: North

TYPE 3BHK  
 Area: 1760 Sq.ft.  
 Carpet Area: 1237 Sq.ft  
 Facing: North

TYPE 2BHK  
 Area: 1277 Sq.ft.  
 Carpet Area: 909 Sq.ft  
 Facing: North

TYPE 2BHK  
 Area: 1332 Sq.ft.  
 Carpet Area: 925 Sq.ft  
 Facing: North



WING 'A' - 2nd to 11th Floor Typical Floor Plan

## 2D FLOOR PLAN

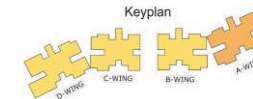


**TYPE 2BHK**  
 Area: 1248 Sq.ft.  
 Carpet Area: 892 Sq.ft  
 Facing: North

**TYPE 3BHK**  
 Area: 1760 Sq.ft.  
 Carpet Area: 1237 Sq.ft  
 Facing: North

**TYPE 3BHK-DUP**  
 Area: 2435 Sq.ft.  
 Carpet Area: 1640 Sq.ft  
 Facing: North

**TYPE 3BHK-DUP**  
 Area: 2532 Sq.ft.  
 Carpet Area: 1673 Sq.ft  
 Facing: North



## WING 'A' - 12th Typical Floor Plan

## 2D FLOOR PLAN



COMMON TERRACE

COMMON TERRACE

TYPE 3BHK-DUP  
Area: 2435 Sq.ft.  
Carpet Area: 1640 Sq.ft  
Facing: North

TYPE 3BHK-DUP  
Area: 2532 Sq.ft.  
Carpet Area: 1673 Sq.ft  
Facing: North



WING 'A' - 13th Typical Floor Plan

## 2D FLOOR PLAN

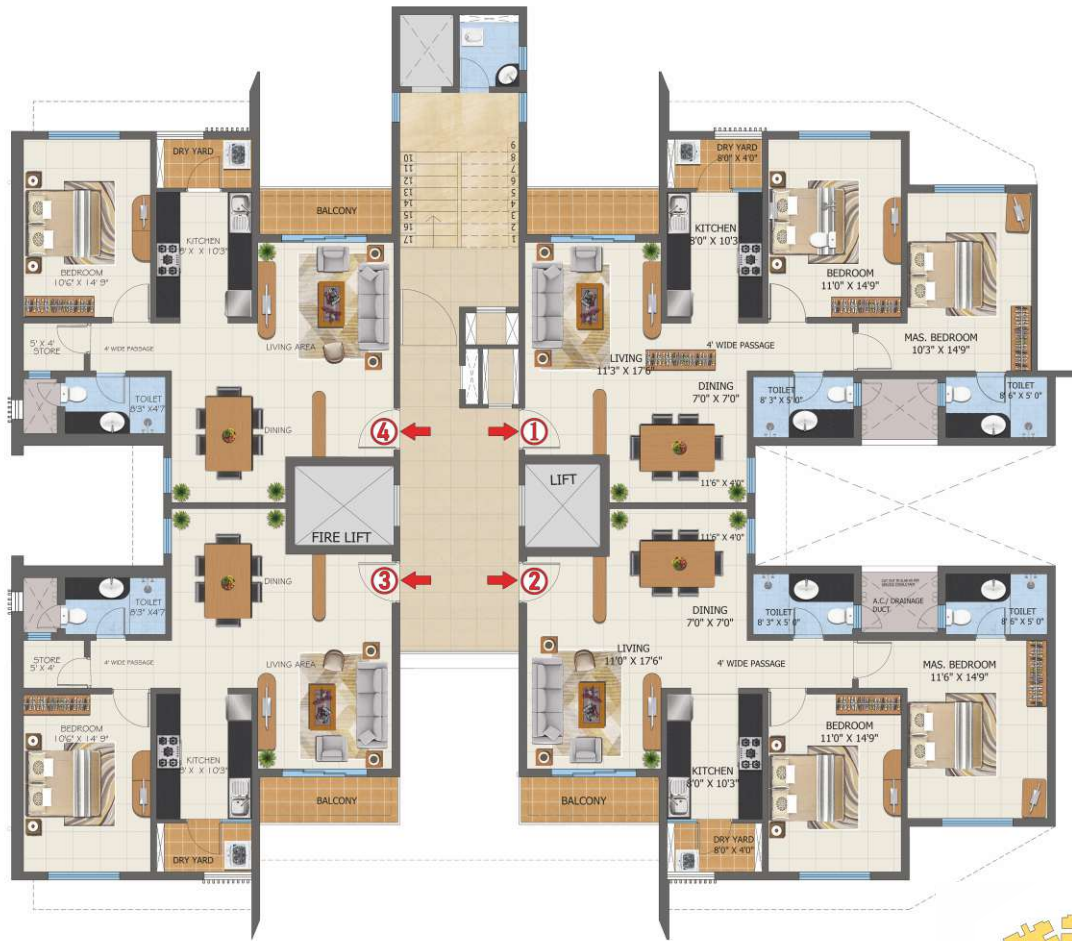


TYPE 2.5BHK  
 Area: 1684 Sq.ft.  
 Carpet Area: 1180 Sq.ft  
 Facing: North

TYPE 4BHK  
 Area: 2275 Sq.ft.  
 Carpet Area: 1711 Sq.ft  
 Facing: North

WING 'B' - Podium & 1st Typical Floor Plan

## 2D FLOOR PLAN

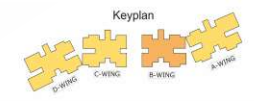


TYPE 1BHK  
 Area: 970 Sq.ft.  
 Carpet Area: 676 Sq.ft  
 Facing: North

TYPE 2BHK  
 Area: 1256 Sq.ft.  
 Carpet Area: 899 Sq.ft  
 Facing: North

TYPE 1BHK  
 Area: 970 Sq.ft.  
 Carpet Area: 674 Sq.ft  
 Facing: North

TYPE 2BHK  
 Area: 1282 Sq.ft.  
 Carpet Area: 918 Sq.ft  
 Facing: North



WING 'B' - 2nd to 5th Floor Typical Floor Plan

## 2D FLOOR PLAN

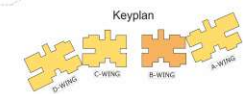


TYPE 2BHK  
Area: 1329 Sq.ft.  
Carpet Area: 923 Sq.ft  
Facing: North

TYPE 2BHK  
Area: 1256 Sq.ft.  
Carpet Area: 899 Sq.ft  
Facing: North

TYPE 2BHK  
Area: 1329 Sq.ft.  
Carpet Area: 920 Sq.ft  
Facing: North

TYPE 2BHK  
Area: 1282 Sq.ft.  
Carpet Area: 918 Sq.ft  
Facing: North



WING 'B' - 6th to 11th Floor Typical Floor Plan

## 2D FLOOR PLAN



**TYPE 2BHK**  
 Area: 1329 Sq.ft.  
 Carpet Area: 923 Sq.ft  
 Facing: North

**TYPE 2BHK**  
 Area: 1256 Sq.ft.  
 Carpet Area: 899 Sq.ft  
 Facing: North

**TYPE 3BHK-DUP**  
 Area: 2526 Sq.ft.  
 Carpet Area: 1658 Sq.ft  
 Facing: North

**TYPE 3BHK-DUP**  
 Area: 2432 Sq.ft.  
 Carpet Area: 1656 Sq.ft  
 Facing: North

WING 'B' - 12th Floor Typical Floor Plan

## 2D FLOOR PLAN



COMMON TERRACE

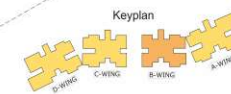
COMMON TERRACE

TYPE 3BHK-DUP  
Area: 2526 Sq.ft.  
Carpet Area: 1658 Sq.ft  
Facing: North

TYPE 3BHK-DUP  
Area: 2432 Sq.ft.  
Carpet Area: 1656 Sq.ft  
Facing: North



WING 'B' - 13th Typical Floor Plan





## 2D FLOOR PLAN



TYPE 4BHK  
 Area: 2275 Sq.ft.  
 Carpet Area: 1711 Sq.ft  
 Facing: North

TYPE 2.5BHK  
 Area: 1684 Sq.ft.  
 Carpet Area: 1180 Sq.ft  
 Facing: North

WING 'C' - Podium & 1st Floor Typical Floor Plan

## 2D FLOOR PLAN

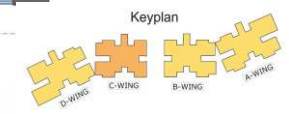


TYPE 2BHK  
 Area: 1282 Sq.ft.  
 Carpet Area: 920 Sq.ft  
 Facing: North

TYPE 1BHK  
 Area: 970 Sq.ft.  
 Carpet Area: 676 Sq.ft  
 Facing: North

TYPE 2BHK  
 Area: 1256 Sq.ft.  
 Carpet Area: 898 Sq.ft  
 Facing: North

TYPE 1BHK  
 Area: 970 Sq.ft.  
 Carpet Area: 674 Sq.ft  
 Facing: North



WING 'C' - 2nd to 5th Floor Typical Floor Plan

# 2D FLOOR PLAN

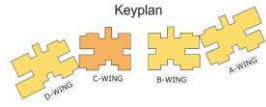


TYPE 2BHK  
 Area: 1282 Sq.ft.  
 Carpet Area: 920 Sq.ft  
 Facing: North

TYPE 2BHK  
 Area: 1329 Sq.ft.  
 Carpet Area: 923 Sq.ft  
 Facing: North

TYPE 2BHK  
 Area: 1256 Sq.ft.  
 Carpet Area: 898 Sq.ft  
 Facing: North

TYPE 2BHK  
 Area: 1329 Sq.ft.  
 Carpet Area: 920 Sq.ft  
 Facing: North



WING 'C' - 6th to 11th Floor Typical Floor Plan

## 2D FLOOR PLAN

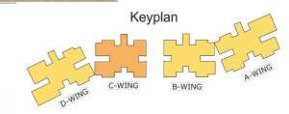


TYPE 2BHK  
Area: 1282 Sq.ft.  
Carpet Area: 920 Sq.ft  
Facing: North

TYPE 2BHK  
Area: 1329 Sq.ft.  
Carpet Area: 923 Sq.ft  
Facing: North

TYPE 3BHK-DUP  
Area: 2381 Sq.ft.  
Carpet Area: 1615 Sq.ft  
Facing: North

TYPE 3BHK-DUP  
Area: 2526 Sq.ft.  
Carpet Area: 1658 Sq.ft  
Facing: North



WING 'C' - 12th Floor Typical Floor Plan

# 2D FLOOR PLAN

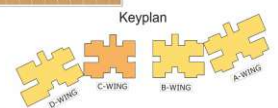


COMMON TERRACE

COMMON TERRACE

TYPE 3BHK-DUP  
 Area: 2381 Sq.ft.  
 Carpet Area: 1615 Sq.ft  
 Facing: North

TYPE 3BHK-DUP  
 Area: 2526 Sq.ft.  
 Carpet Area: 1658 Sq.ft  
 Facing: North



WING 'C' - 13th Floor Typical Floor Plan

## 2D FLOOR PLAN



TYPE 5BHK  
 Area: 2948 Sq.ft.  
 Carpet Area: 2005 Sq.ft  
 Facing: North

TYPE 4BHK  
 Area: 2312 Sq.ft.  
 Carpet Area: 1690 Sq.ft  
 Facing: North

WING 'D' - Podium & 1st Floor Typical Floor Plan

## 2D FLOOR PLAN



TYPE 2BHK  
 Area: 1387 Sq.ft.  
 Carpet Area: 953 Sq.ft  
 Facing: North

TYPE 2BHK  
 Area: 1274 Sq.ft.  
 Carpet Area: 912 Sq.ft  
 Facing: North

TYPE 3BHK  
 Area: 1762 Sq.ft.  
 Carpet Area: 1234 Sq.ft  
 Facing: North

TYPE 2BHK  
 Area: 1251 Sq.ft.  
 Carpet Area: 890 Sq.ft  
 Facing: North

WING 'D' - 2nd to 11th Floor Typical Floor Plan

## 2D FLOOR PLAN

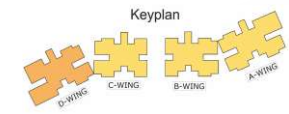


TYPE 2BHK  
Area: 1387 Sq.ft.  
Carpet Area: 953 Sq.ft  
Facing: North

TYPE 2BHK  
Area: 1274 Sq.ft.  
Carpet Area: 912 Sq.ft  
Facing: North

TYPE 4BHK-DUP  
Area: 3524 Sq.ft.  
Carpet Area: 2305 Sq.ft  
Facing: North

TYPE 3BHK-DUP  
Area: 2371 Sq.ft.  
Carpet Area: 1604 Sq.ft  
Facing: North



WING 'D' - 12th Floor Typical Floor Plan



# 2D FLOOR PLAN



COMMON TERRACE

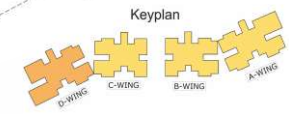
COMMON TERRACE

TYPE 4BHK-DUP  
Area: 3524 Sq.ft.  
Carpet Area: 2305 Sq.ft  
Facing: North

TYPE 3BHK-DUP  
Area: 2371 Sq.ft.  
Carpet Area: 1604 Sq.ft  
Facing: North



WING 'D' - 13th Floor Typical Floor Plan



# LOCATION MAP



## COMPLETED PROJECTS



Rain Tree Park Dwarika Krishna  
Vijayawada



Rain Tree Park (Malaysian Township)  
Hyderabad



FIRST CITY  
— MIHAN, NAGPUR —



Developer:  
Nagpur Integrated Township Pvt Ltd (NITPL)  
An SPV of IJM Group of Companies  
H.No. 1-89/1, Plot No. 42 & 43,  
3rd and 4th floor, Kavuri Hills,  
Phase -1, Madhapur,  
Hyderabad- 500081



For details contact:  
Sales and Marketing Office  
Plot No. 2, Sector - 21  
MIHAN De-Notified SEZ area  
Khapri (Rly), Nagpur Rural - 441108  
Mr. Pankaj Maniktala | T: 74200 74511  
E: nitpl@ijm.com, nitplfcp@gmail.com



Registration Certificate  
Of Project  
P50500010398

DISCLAIMER: This brochure is purely a conceptual presentation of the project and not a legal offering. Whilst reasonable care has been taken in the preparation of this brochure the promoters the right to make amendments, modifications and/or alterations as may be necessitated without prior notice. The amenities & facilities shall be provided on such terms and conditions and as may be decided by the developer at the time of execution of agreement of lease. The information, photographs and images contained in this brochure are meant for indicative purposes and reference only.

APPROVED  
BANKERS:

